



Synertrol Horti Oil®

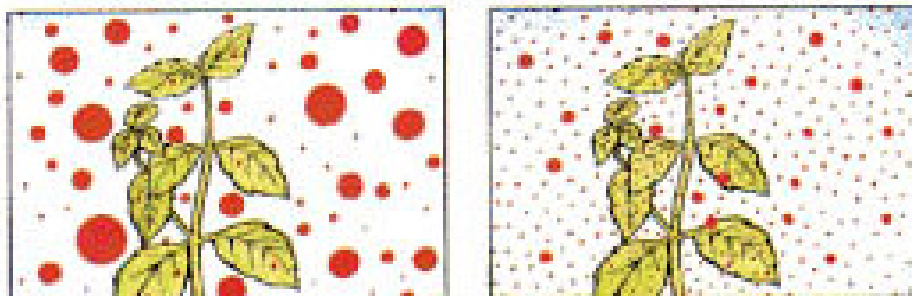
Conventional hydraulic spray pattern reveals:

- Larger droplets which bounce off to be lost in the soil and
- Small droplets which evaporate and drift off the target.

Spray droplets tend to evaporate becoming smaller and lighter producing drift.

A normal crop spray droplet sits high on the leaf. In wet conditions it is easily washed off. In dry conditions evaporation reduces the droplet size.

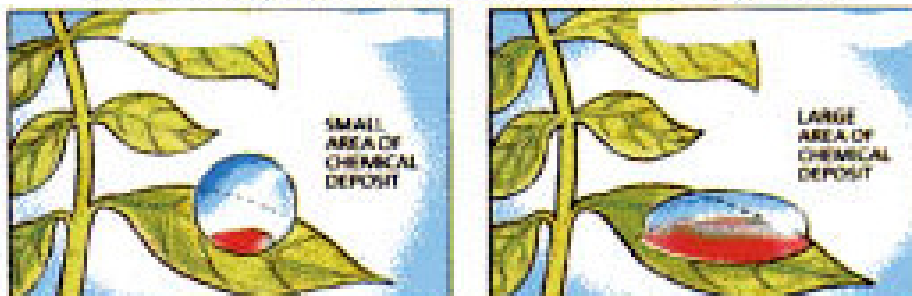
CONSISTENT DROPLET SIZE AND SPRAY PATTERN



DRIFT REDUCTION



SPREADING ACTION FOR HIGHER EFFICIENCY



Synertrol Horti Oil-carried spray maintains a far higher proportion of uniform size droplets and a consistent spray pattern, ensuring you cover the target more effectively.

Synertrol Horti Oil protects the spray droplets from evaporation, maintaining good droplet sizes, so reducing drift.

Synertrol Horti Oil's emulsifier spreads out the spray droplet, covering more of the target with chemical. Its oil coating resists rainwash and evaporation protecting the larger treated area. Less water is required.



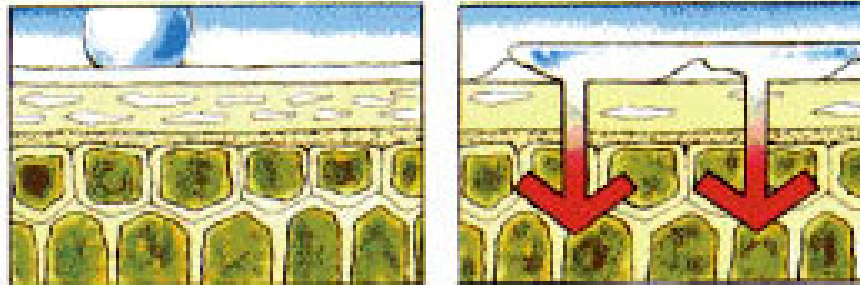
Synertrol Horti Oil®

The waxy platelets that protect the leaf act as a barrier to spray penetration, particularly, particularly in drought conditions.

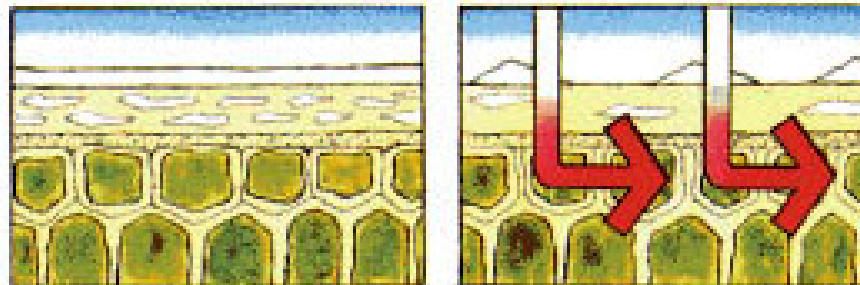
Fluids are transmitted from cell to cell by osmosis.

Australia's unpredictable climate is an ever-present threat to pest control programs. A sudden brief shower can negate the application of conventional crop sprays.

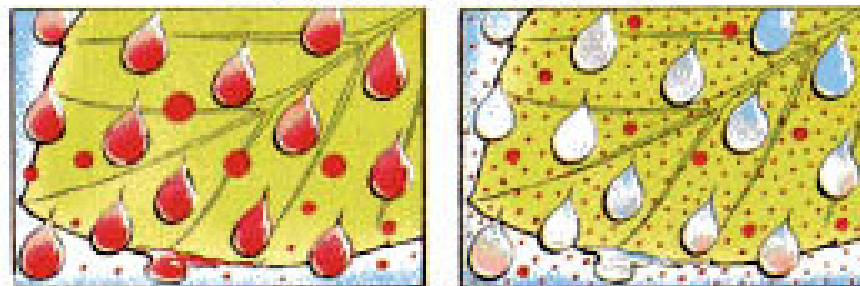
PENETRATING WEED-LEAF DEFENCES



FASTER CIRCULATION INSIDE THE WEED



RESISTING RAIN 'WASH-OFF'



Synertrol Horti Oil's base is selected to actively promote spray movement through the waxy platelets, encouraging fast penetration of spray mixture through the leaf surface.

Synertrol Horti Oil can significantly reduce interfacial tensions encouraging speedy movement of sprays through the plants' structure.

As a safe oil based spray carrier, Synertrol Horti Oil's adhesive/waterproof properties resist rain wash-off, extending the effective period of contact with the leaf or insect surface.